



PMC Approach

VecTrance / DNI Group provides oil operating companies, with PMC packages for construction project of oil/gas, mining, petrochemical , power production facilities

MISSION

Our mission:

- Assist project owners, contractors in the analysis, set up and achievement of their projects.

- Answer the engineering and project management requirement and specialized competencies of our clients, on site, in order to :
 - optimize their PMC needs,
 - supervise engineering or construction contracts,
 - provide technology transfer

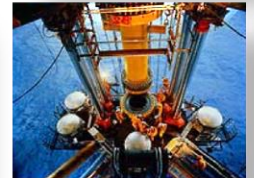


VISION

Our vision:

- ➡ Create a close FOUNDERShip with our clients in order to help them achieve Oil & Gas and energy projects on time, under budget and with quality standards exceeding expectancies

- ➡ **VecTrance / DNI Group strategy** is to expand its operations on a global basis through the development and diversification into new markets and business streams, with a continuous focus to strengthen its core competencies.



OBJECTIVES AND CAPABILITIES

Objectives:

- Provides ultimately engineering deliverables for procurement and construction of process installations, based on advanced project engineering management capabilities, which allow control of project quality, cost and delay.



Capabilities and disciplines:

- Our PMC services are orientated in the integration and coordination of various know how covering the following engineering specialties and know how :
 - Process (simulations, spec, PID preparation, OM preparation), Mechanical: rotating machines, piping, vessels, pipeline, Electrical, Process control/ Instrumentation (field bus standard, old standards ...), Civil engineering
 - Construction supervision, Inspection, QA/QC, HSE engineering/management strong experience
 - Project control (scheduling, cost/estimating, progress monitoring, contract management/administration....), high backlog of experience

OUR COMPETITIVE ADVANTGE

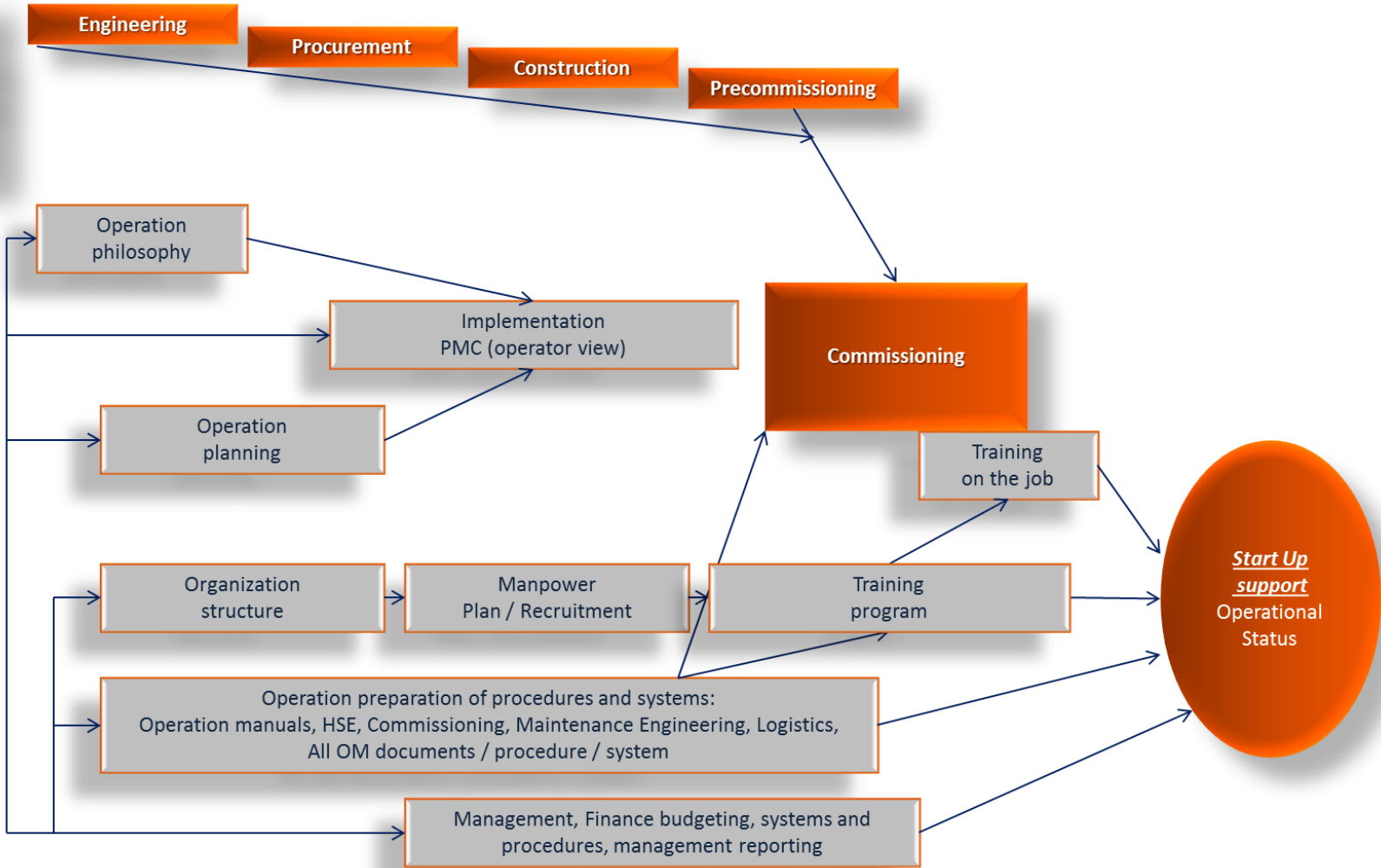
- Lean Management Team gathering one of the best track record in the Oil & Gas and Power Generation industry with minimum overhead
- Project Teams tailored to client's requirements and composed of highly skilled professionals
- Flexible structure allowing complex contract requirements

➡ **Capabilities and network of relations of a multinational firm allied to the reactivity and adaptability of a start-up company**

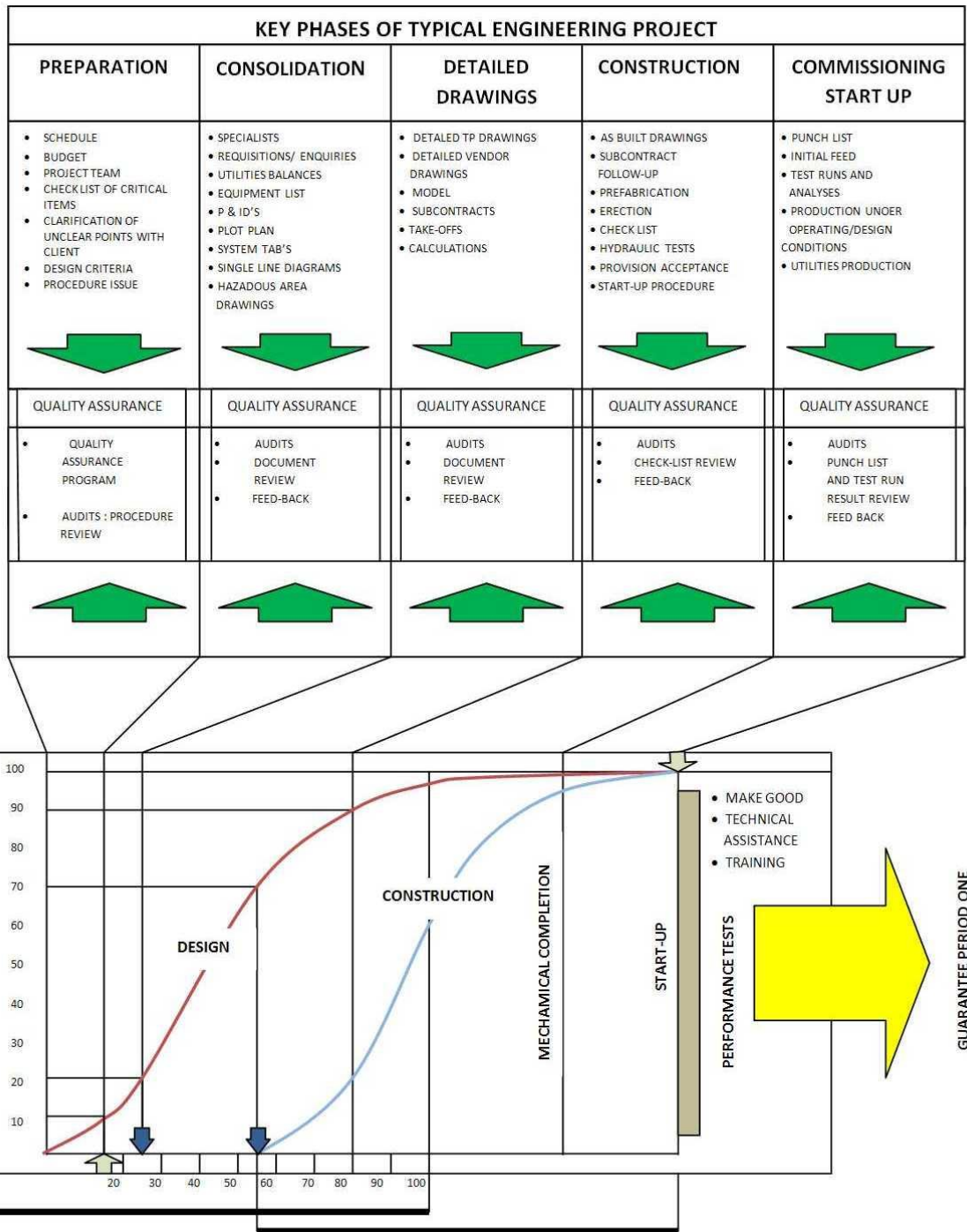


OPERATION PREPARATION PLAN

Project
VecTrance / DNI Group
Venture
Objectives



QC ENGINEERING



PMC : Detailed tasks

- **Project management including**
 - Project control (scheduling, cost control, progress control, estimation)
 - Project strategy development
 - Documentation management
 - HSE & QA/QC



■ **Engineering coordination & supervision**

- Civil
- Steel structure
- Vessels
- Piping
- Electrical
- Instrumentation
- DCS
- Mechanical
- Thermal
- Insulation & painting



PMC : Detailed tasks

- **Procurement coordination**
 - Equipments & materials Purchasing
 - Work shop inspection
 - Expediting
 - Contracting
 - Transport

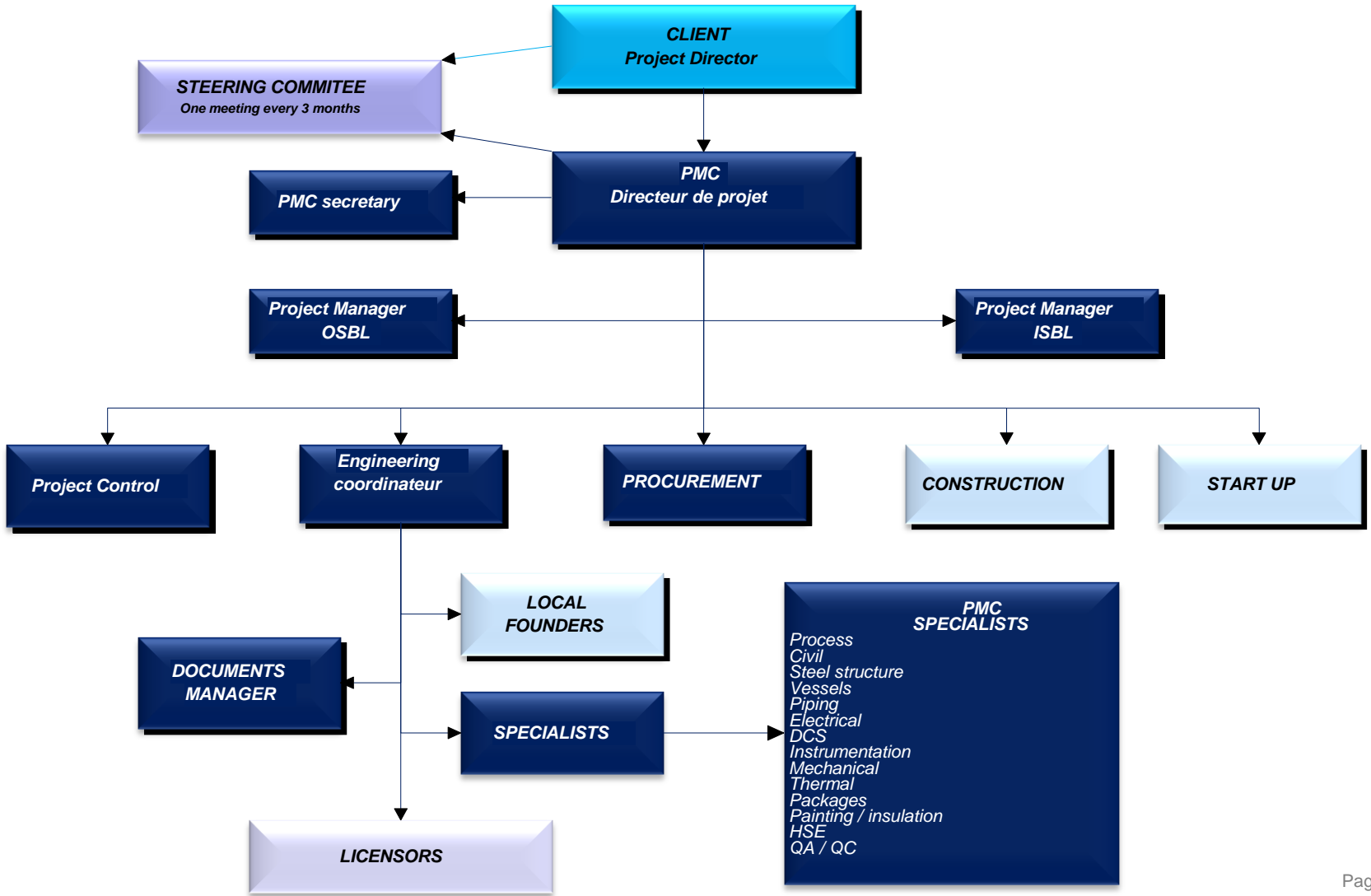


PMC : Detailed tasks

- **Construction management**
 - Construction management
 - Construction supervision
 - Construction quality control
 - Construction HSE
 - Pre-commissioning supervision



ORGANIZATION

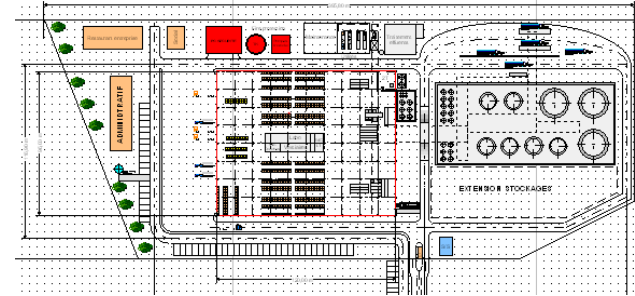


IT KNOWLEDGE AND SOFT, PROCEDURES

- ➔ The knowledge base of VecTrance / DNI Group covers lessons learnt, best practices, procedures, good practices of international standards (QA/QC, API, ASME, ANSI, ISO, NFPA, OSHA, IEC ...) built in with up to date software for design and engineering management.

- ➔ The Knowledge Management Base is an intranet with an engineering IT platform (comprising groupware, workflow, doc control/configuration) such as Smart plant foundation; design tools soft are for example: Hysim, Autocad, Pdms, Primavera, stress analysis soft, instrumentation/control design soft

Task	Start	End	Color
Task 1	0000	0005	Green
Task 2	0005	0010	Green
Task 3	0010	0015	Green
Task 4	0015	0020	Green
Task 5	0020	0025	Green
Task 6	0025	0030	Green
Task 7	0030	0035	Green
Task 8	0035	0040	Green
Task 9	0040	0045	Green
Task 10	0045	0050	Green
Task 11	0050	0055	Green
Task 12	0055	0100	Green
Task 13	0100	0105	Green
Task 14	0105	0110	Green
Task 15	0110	0115	Green
Task 16	0115	0120	Green
Task 17	0120	0125	Green
Task 18	0125	0130	Green
Task 19	0130	0135	Green
Task 20	0135	0140	Green
Task 21	0140	0145	Green
Task 22	0145	0150	Green
Task 23	0150	0155	Green
Task 24	0155	0200	Green
Task 25	0200	0205	Green
Task 26	0205	0210	Green
Task 27	0210	0215	Green
Task 28	0215	0220	Green
Task 29	0220	0225	Green
Task 30	0225	0230	Green
Task 31	0230	0235	Green
Task 32	0235	0240	Green
Task 33	0240	0245	Green
Task 34	0245	0250	Green
Task 35	0250	0255	Green
Task 36	0255	0300	Green
Task 37	0300	0305	Green
Task 38	0305	0310	Green
Task 39	0310	0315	Green
Task 40	0315	0320	Green
Task 41	0320	0325	Green
Task 42	0325	0330	Green
Task 43	0330	0335	Green
Task 44	0335	0340	Green
Task 45	0340	0345	Green
Task 46	0345	0350	Green
Task 47	0350	0355	Green
Task 48	0355	0400	Green
Task 49	0400	0405	Green
Task 50	0405	0410	Green
Task 51	0410	0415	Green
Task 52	0415	0420	Green
Task 53	0420	0425	Green
Task 54	0425	0430	Green
Task 55	0430	0435	Green
Task 56	0435	0440	Green
Task 57	0440	0445	Green
Task 58	0445	0450	Green
Task 59	0450	0455	Green
Task 60	0455	0500	Green
Task 61	0500	0505	Green
Task 62	0505	0510	Green
Task 63	0510	0515	Green
Task 64	0515	0520	Green
Task 65	0520	0525	Green
Task 66	0525	0530	Green
Task 67	0530	0535	Green
Task 68	0535	0540	Green
Task 69	0540	0545	Green
Task 70	0545	0550	Green
Task 71	0550	0555	Green
Task 72	0555	0600	Green
Task 73	0600	0605	Green
Task 74	0605	0610	Green
Task 75	0610	0615	Green
Task 76	0615	0620	Green
Task 77	0620	0625	Green
Task 78	0625	0630	Green
Task 79	0630	0635	Green
Task 80	0635	0640	Green
Task 81	0640	0645	Green
Task 82	0645	0650	Green
Task 83	0650	0655	Green
Task 84	0655	0700	Green
Task 85	0700	0705	Green
Task 86	0705	0710	Green
Task 87	0710	0715	Green
Task 88	0715	0720	Green
Task 89	0720	0725	Green
Task 90	0725	0730	Green
Task 91	0730	0735	Green
Task 92	0735	0740	Green
Task 93	0740	0745	Green
Task 94	0745	0750	Green
Task 95	0750	0755	Green
Task 96	0755	0800	Green
Task 97	0800	0805	Green
Task 98	0805	0810	Green
Task 99	0810	0815	Green
Task 100	0815	0820	Green
Task 101	0820	0825	Green
Task 102	0825	0830	Green
Task 103	0830	0835	Green
Task 104	0835	0840	Green
Task 105	0840	0845	Green
Task 106	0845	0850	Green
Task 107	0850	0855	Green
Task 108	0855	0900	Green
Task 109	0900	0905	Green
Task 110	0905	0910	Green
Task 111	0910	0915	Green
Task 112	0915	0920	Green
Task 113	0920	0925	Green
Task 114	0925	0930	Green
Task 115	0930	0935	Green
Task 116	0935	0940	Green
Task 117	0940	0945	Green
Task 118	0945	0950	Green
Task 119	0950	0955	Green
Task 120	0955	1000	Green



- *Scheduling*
- *Primavera*
- *Microsoft project*
- *Cost control*
- *Cost analysis*
- *Progress control*
- *Progress analysis*
- *Documents management*
- *Smart plan*
- *Documentum*
- *Filesdoc*

EXPERIENCE AND REFERENCES OF VecTrance / DNI Group FOUNDERS

- ➔ Oil/Gas processing, treatment plants, power gen, solar,...
- ➔ Gas processing units, refinery units (IFP Patents), Gas power-generation plants
- ➔ Offshore platform topsides, FPSO, pipelines, offsite utilities.



VecTrance / DNI Group experience covers news unit engineering designs, as well as revamping or installations modifications.

Actually VecTrance / DNI Group is used to work on a lump sum basis, on call off contract, or bill of quantities, as required its by clients.

WORLDWIDE EXPERIENCE 1999 – 2015: OILGAS, POWERGEN, SOLAR

- **F.E.E.D. (Process and Disciplines)**: Burlington, Anadarko, Total EP Yemen, Bouygues Offshore, Foster Wheeler, Kvaerner, Technip, Shell, RNZ Integrated, PC Myanmar, TOTAL
- **FEASIBILITY (Process Defin, Architecture Design and Optimization)**: Bapco, Agoco, Eni, Agip Kco, MPG Elf, Total Austral, Kvaerner, Technip, GDF, BEERD, Eco...
- **DESIGN ENGINEER/PROJECT CONTROL**: Saipem, Korea gasco, Geostock, Repsol, Technip, Total Sincor, Total Nigeria/Angola/Venez, NEPA, Modec, Petrobras, VME Process inc, SBM, Mc Dermott, Sun oil, Santa Fe Ener Res of China, Technip, OGER, Polysius, Yemen Ing, Atlantic Ing
- **HSE ENGINEERING/PROJ CONTRACT MANAGT**: Apache, Nimir, Total, Exxon, Perenco, Pedco, Hyundai, Technip, Cnooc
- **PMC procuremt/Construct management: oilgas, power gen, Chem/infrastructures**
 - GOSP/Oil : Kvaerner, Burlington, Technip, Total, Shell, Sincor, Repsol
 - Gas , Petrochem: Total, Kvaerner, Elf, FW, Kvaerner, FW, ENI, Atlantic LNG, Total,
 - GDF, Cofatec, PC Myanmar, FW, Lavalin, Arkema,
 - Power plant/cement: Nepa, EDF, Lafarge, Tractebel GDF, GE, Marubeni, Alstom...
 - Civil infrastr: Oger, Thyssen, ...

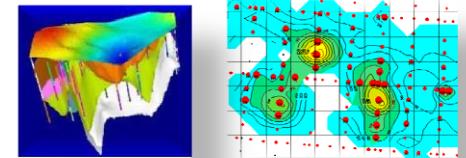
SOME PMC FOUNDERS REFERENCES

Client : DNI METALS, KELT,....

date 2004, 2009

PMC function basic geology studies, sow, planning contract management, QA/QC

details Pmc of all geophysics and geochemistry studies: contract management, planning, supervision of contractors

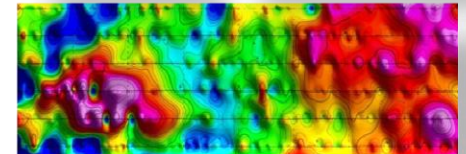


Client : TOTAL, NIMIR, PERTAMINA, NIOC

date 2003, 2008

PMC function studies basic petroleum enging ,site geolog, planning contract management, feed

details Pmc of all reservoir studies/well site geolog: contract management, planning, supervision of logging contractors



SOME PMC FOUNDERS REFERENCES

Client:	SINCOR (Total Statoil PDV), Venezuela – 5.3 B \$, 1998,2008
Client	LAFARGEHOLCIM, 2013,15, 9 PROJECTS ON 8 COUNTRIES, 45refer with oil co Shell, BP Angola,...
PMC functions:	construct Project control, HSE, OM preparation
Detail on Sincor:	Overall FEED (Frontal Engineering Design) supervision (Foster Wheeler US), Engineering contractors supervision (FW, Technip, Uhde, ...) in Caracas, Puerto La Cruz and San José (Planning contract management). Construction management upstream facilities (heavy oil process). Supervision maintenance, operation, preparation programs and HSE supervision. Upgraded PMC engineering, procurement, construction and commissioning.
Size:	1500 men months



SOME PMC FOUNDERS REFERENCES

Client: Burlington, London, Total Argentina

Date: 2001-2002

PMC function: Engineering, HSE, Project control

Detail: Conceptual and feasibility studies, basic engineering of an Algerian project.
Supervision of contractors in charge of the project.

Size: 144 men months.



SOME PMC FOUNDERS REFERENCES

Client:	EDF (Electricité De France),...
Date:	1996 to 2001
PMC functions:	project control
Detail:	PMC of major shutdown of all France nuclear plants. Preparation of engineering, shutdown implementation, cost planning, vendor and contractor contract management.
Size:	370 men months.



SOME PMC FOUNDERS REFERENCES

Client:	Cofathec (GDFSuez)
Date:	1997 to 2000
PMC functions:	Engineering, HSE, Project Control, QA/QC
Detail:	PMC of 3 power generators and cogeneration plants in France. Engineering supervision and contractor supervision up to Pre-commissioning.
Size:	45 men months.



SOME PMC FOUNDERS REFERENCES

- Client:** Kaduna Refining Company, Nepa, Afam power plant Nigeria
- Date:** 1991-94
- PMC function:** Engineering and project control
- Detail:** Feasibility and FEED (Frontal Engineering Design) of new projects (reforming, hydro-treatments, utilities...).
Supervision of contractors (Lummus...).
- Size:** 70 men months



SOME PMC FOUNDERS REFERENCES

Client: Amoco, Houston

Date: 1992

PMC function: Engineering, project control, QA/QC

Detail: Supervision of contractors in charge of conceptual and feasibility studies of a Gulf production and semi-sub platform.

Size: 65 men months.



SOME PMC FOUNDERS REFERENCES

Client: Alfol plant, Mashino Import

Date : 1977-78

PMC function: Engineering, Project Control, QA/QC

Detail: FEED (Frontal Engineering Design), engineering, procurement start.
Supervision of contractors (Alfol process from Conoco).
Start up supervision.

Client: Conoco, El Paso,

Date: 1975-76

PMC function: Engineering, Project Control, QA/QC

Detail: Construction Phase of San Juan Basin BCG gas plant (NGL).



SOME PMC FOUNDERS REFERENCES

Client:	RENAULT
Date:	1991-2007
PMC function:	Engineering and Project Control
Detail:	PMC of car launching projects, engine development projects and automotive plants construction.
Size:	1030 men months.



Client:	PSA (PEUGEOT – CITROËN)
Date:	1998-2007
PMC function:	Engineering and Project Control
Detail:	PMC of 4 car launching projects, engine development projects and automotive plants construction.
Size:	1440 men months.

SOME PMC FOUNDERS REFERENCES

Client: AGIP, London

Date: 2003-2004

PMC function: Engineering, HSE, and project control

Detail: PMC of conceptual studies and feasibility phase of KCO mega project (Kazakstan) of subsea architecture in Artic conditions.

Analysed 50 options and evaluated them on economics, risk, operation maintenance and HSE criteria.

Optimised architecture and performed cost control and planning management.

Supervision of Parsons, FMC and other vendors.

Size: 72 men months.



SOME PMC FOUNDERS REFERENCES

Other PMC DNI K founders References in oil/gas drilling/engin/management 1997/2011

Arco , Atlantic LNG
Caspian gas corp, Agoco
Amoco,Chevron,
Orientpetroleum,
Pedco, South Pars co
Wascana Total
Pluspetrol,
Monument,
BHP, Nimir,
Repsol,
SakhalineEnergy,
Shell (Malais, Nigeria)
Saudi Aramco,Sec

